

## WiFi Printer Configuration Methods

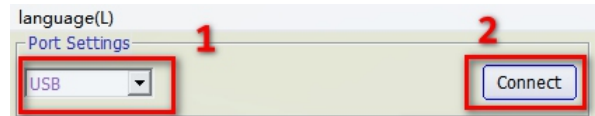
### 1. Use the "Printer Setup Tool" by PC

Download printer setup tool via the link :

[www.cnfujun.com/d/33](http://www.cnfujun.com/d/33) | [www.cnfujun.com/d/39](http://www.cnfujun.com/d/39)

and find "Printer Tools" – Printer Setup Tool.

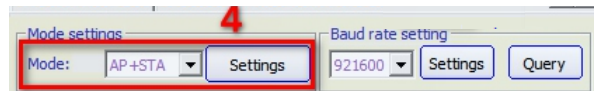
1–2. Select the correct port "USB" and click "Connect".



3. Select WiFi parameter settings



4. Select "AP+STA" in mode, and then click "Settings"



1

5. STA mode setting method:

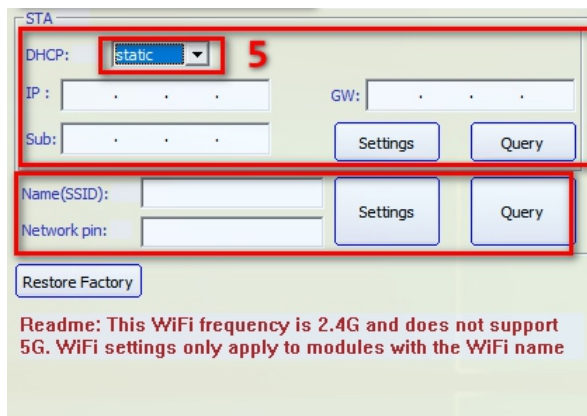
- ①. DHCP: Select "static"
- ②. IP: Enter the IP address (Get IP information in the local area network)
- ③. GW: input gateway (Get GW information in the local area network)
- ④. Sub: Enter the subnet mask (Get Sub information in the local area network)

(Above steps are completed, pls click the corresponding "Settings")

⑤. Name (SSID): Router WiFi Name

⑥. Network pin: WiFi password

(Above steps are completed, pls click the corresponding "Settings")



2

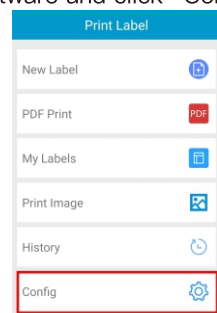
### 2. Use Label Editing Software "Print Label"

Label Editing Software WiFi configuration method:

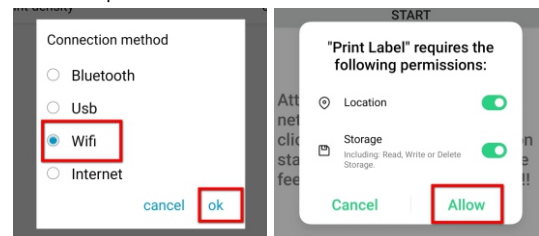
①. Open the label editing software and click "Config";



Print Label  
Label Editing Software  
Install Password: 1234



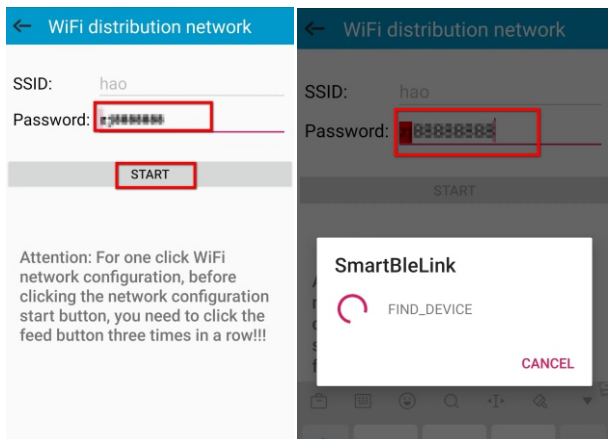
②. Select the connection method: "WiFi"; When using the APP for the first time, it will prompt you to obtain relevant permissions. Please click "Allow".



3

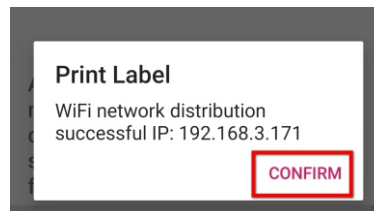
③. After entering the WIFI password, click “Start” ;  
Please note that before starting, be sure to let the printer enter the distribution mode:

(press the FEED button 3 times in a row, you will hear two beeps and automatic printing information shows that has already enter the distribution mode)



4

④. Please wait till to prompt that the network distribution is successful and the printer IP address is obtained;  
If the configuration is not successful, please check that the phone is connected to WIFI correctly and the WIFI password is entered correctly.



### 3. Use Android APP “Set Tools”

①. Mobile phone scan below QR code download the tool or go to APP website to download:

<https://www.pgyer.com/ZQRStW>

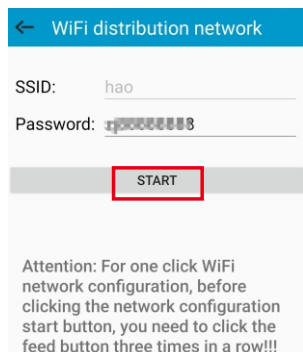


5

②. After installing the APP, open the app and find the “WiFi config”;



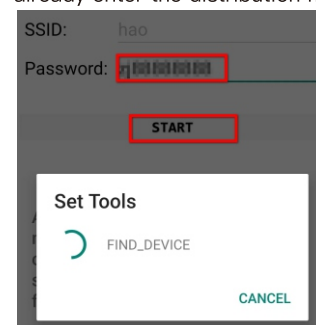
③. Enter the WIFI password;



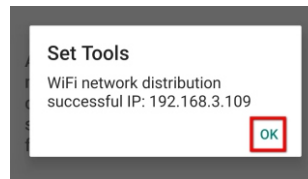
6

④. Click “Start” ;  
Please note that before starting, be sure to let the printer enter the distribution mode:

(press the FEED button 3 times in a row, you will hear two beeps and automatic printing information shows that has already enter the distribution mode)



⑤. Please wait till to prompt that the network distribution is successful and the printer IP address is obtained;  
If the configuration is not successful, please check that the phone is connected to WIFI correctly and the WIFI password is entered correctly.



7